

# VELOCICALC<sup>®</sup> AIR VELOCITY METER MODEL 9525

The Model 9525 is an economical choice for a digital Air Velocity Meter, without compromising accuracy or precision. Professionals find it the ideal tool for face velocity measurements in fume hoods, spray booths, or for IAQ and ventilation system checks. The Model 9525 has a 3-inch retractable probe and is UL listed as intrinsically safe for use in hazardous locations for Divisions 1 and 2 in Class I, Groups C and D; Class II, Groups E, F and G; and Class III.



## Applications

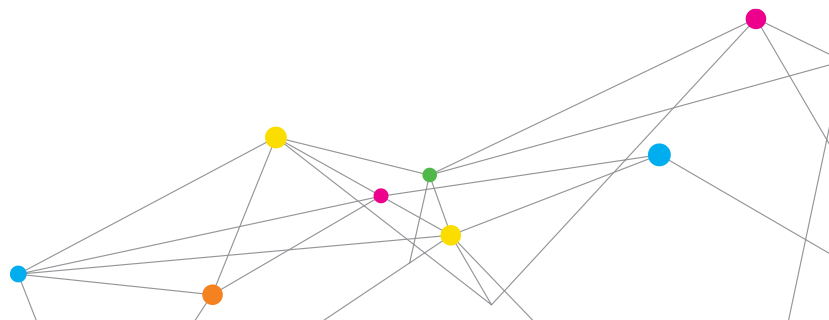
- + HVAC system performance
- + Commissioning
- + Plant maintenance

## Features and Benefits

- + Accurate air velocity measurement
  - Range 0 to 2,000 ft/min (0 to 10 m/s)
- + Integrated probe attachment
- + Easy to read display
- + Intrinsically safe
- + Calibration certificate included



UNDERSTANDING, ACCELERATED



## SPECIFICATIONS

### VELOCICALC® AIR VELOCITY METER MODELS 9525

#### Velocity

|                             |  |
|-----------------------------|--|
| Range                       | 0 to 2,000 ft/min (0 to 10 m/s)                                      |
| Accuracy <sup>1&amp;2</sup> | ±5% of reading or ±5 ft/min<br>(±0.025 m/s), whichever<br>is greater |
| Resolution                  | 1 ft/min (0.01 m/s)  |

#### Instrument Temperature Range

|                         |                           |
|-------------------------|---------------------------|
| Operating (Electronics) | 40 to 113°F (5 to 45°C)   |
| Operating (Probe)       | 32 to 122°F (0 to 50°C)   |
| Storage                 | -4 to 140°F (-20 to 60°C) |

#### External Meter Dimensions

2.7 in. x 5.2 in. x 1.3 in. (6.8 cm x 13.2 cm x 3.3 cm)

#### Probe Dimensions

|                  |                   |
|------------------|-------------------|
| Length           | 3.1 in. (79 mm)   |
| Diameter of Tip  | 0.25 in. (6.4 mm) |
| Diameter of Base | 0.25 in. (6.4 mm) |

#### Meter Weight with Batteries

0.6 lbs (0.27 kg)

#### Power Requirements

Four AA-size batteries

<sup>1</sup> Temperature compensated over an air temperature range of 40 to 150°F (5 to 65°C).

<sup>2</sup> The accuracy statement begins at 30 ft/min through 2,000 ft/min  
(0.15 m/s through 10 m/s)

Specifications are subject to change without notice.

TSI, the TSI logo and VelociCalc are registered trademarks of TSI Incorporated.



UNDERSTANDING, ACCELERATED

**TSI Incorporated** - Visit our website [www.tsi.com](http://www.tsi.com) for more information.

|                |                               |                  |                              |
|----------------|-------------------------------|------------------|------------------------------|
| <b>USA</b>     | <b>Tel:</b> +1 800 874 2811   | <b>India</b>     | <b>Tel:</b> +91 80 67877200  |
| <b>UK</b>      | <b>Tel:</b> +44 149 4 459200  | <b>China</b>     | <b>Tel:</b> +86 10 8219 7688 |
| <b>France</b>  | <b>Tel:</b> +33 4 91 11 87 64 | <b>Singapore</b> | <b>Tel:</b> +65 6595 6388    |
| <b>Germany</b> | <b>Tel:</b> +49 241 523030    |                  |                              |